

Student Information

Name: _____ Date of Birth: ___ / ___ / ___ Grade/Class: _____

Methodology

This 30-week diagnostic assessment will initiate at the first sign of a voice change. Testing of the development of the male voice will take place on a bi-weekly basis throughout the school year, on weeks opposite the female development testing. Each test will be administered in a private setting between teacher and student, and will be comprised of several criteria. This assessment device keeps track of each student's vocal development, and informs decisions about part assignments to foster success during this transition.

John Cooksey's Developmental Stages and Classifications

Midvoice I

- Upper range unstable
- Breathy/constricted
- Ht./wt. increase
- Range decreases by ~ 4 – 17 half steps

Midvoice II

- Falsetto register
- Adam's apple
- Low pitches descend
- Husky, thicker voice

Midvoice IIa

- Strained/breathy high
- Experimentation with lower pitches (caution)
- Heavy production
- Obvious breaks

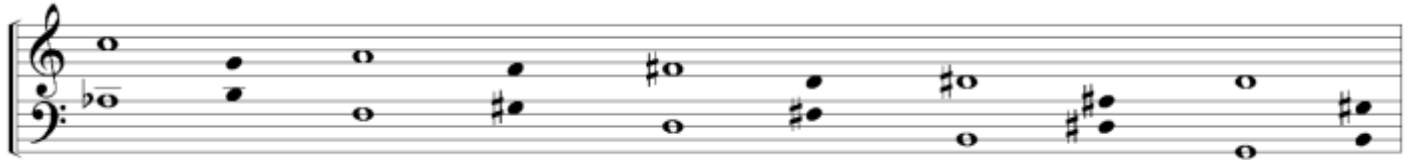
New Baritone

- Add 4 lower half steps
- Missing notes between modal and falsetto
- Chest/shoulders
- Limited agility
- Heavy production

Settling Baritone

- Range increases
- Focused and clear
- Vocal tract finalizes volume
- Emerging adult voice

Approximate Ranges



Assessment Data

Date of Initiation: ___ / ___ / ___

Date of Completion: ___ / ___ / ___

Week	Total Range	Tessitura	Voice Quality/Register/Comments	Speech	Classification
1					M1 M2 M2a N S
2					M1 M2 M2a N S
3					M1 M2 M2a N S
4					M1 M2 M2a N S
5					M1 M2 M2a N S
6					M1 M2 M2a N S
7					M1 M2 M2a N S
8					M1 M2 M2a N S
9					M1 M2 M2a N S
10					M1 M2 M2a N S
11					M1 M2 M2a N S
12					M1 M2 M2a N S
13					M1 M2 M2a N S
14					M1 M2 M2a N S
15					M1 M2 M2a N S

1. Speaking Pitch

Say the following phrases. Allow the pitch inflections to occur naturally and follow the emotions implied by the words.
 "Hello!" "I'm feeling sad today, but I'm getting happier!" "Hello, [teacher name], how are you today?"

2. Vocal Range

Starting Key (M1) Starting Key (M2)

loo loo loo loo loo loo loo loo loo loo loo

Starting Key (M2a) Starting Key (NB/SB)

loo loo loo loo loo loo loo loo loo loo loo

3. Tessitura

Sing "America" on an appropriate starting key based on the center of the discovered total range. Transpose to keys one diatonic step above and below this starting key to discover tessitura.

Student Information

Name: _____ Date of Birth: ___ / ___ / ___ Grade/Class: _____

Methodology

This 30-week diagnostic assessment will initiate at the first sign of a voice change. Testing of the development of the female voice will take place on a bi-weekly basis throughout the school year, on weeks opposite the male development testing. Each test will be administered in a private setting between teacher and student, and will be comprised of several criteria. This assessment device keeps track of each student's vocal development, and informs decisions about part assignments to foster success during this transition.

Lynne Gackle's Developmental Stages and Classifications

Phase IIa – Pubescence

- Average speaking/lowest singing pitch lower 1 half step; high notes increase
- Breathiness when singing high notes
- Breaks from F₄ to B-flat₄
- Reduced agility

Phase IIb – Post-Menarche

- Average speaking/lowest singing pitch may lower and additional half step
- Range lowers by 3 half steps low, 2 high
- Breathiness throughout the range
- Breaks between all registers

Phase III – Young Adult

- Voice begins to stabilize
- Richer timbre, average speaking pitch lowers an additional half step
- Range, agility increase substantially
- Breathiness may persist for some years

Approximate Ranges



Assessment Data

Date of Initiation: ___ / ___ / ___

Date of Completion: ___ / ___ / ___

Week	Total Range	Tessitura	Voice Quality/Register/Comments	Speech	Classification
1					IIa IIb III
2					IIa IIb III
3					IIa IIb III
4					IIa IIb III
5					IIa IIb III
6					IIa IIb III
7					IIa IIb III
8					IIa IIb III
9					IIa IIb III
10					IIa IIb III
11					IIa IIb III
12					IIa IIb III
13					IIa IIb III
14					IIa IIb III
15					IIa IIb III

1. Speaking Pitch

Say the following phrases. Allow the pitch inflections to occur naturally and follow the emotions implied by the words.
 "Hello!" "I'm feeling sad today, but I'm getting happier!" "Hello, [teacher name], how are you today?"

2. Vocal Range

loo loo loo loo loo

3. Tessitura

Sing "America" on an appropriate starting key based on the center of the discovered total range. Transpose to keys one diatonic step above and below this starting key to discover tessitura.